

PART NO.  
PS42V20A-0F

PART REVISIONS				
ECO	REV	DESCRIPTION	DATE	APPROVED
	1	PRODUCTION RELEASE	4/27/01	
	2	CHANGED WIRING INPUT PINDUT	11/19/01	

NOTE:  
1 POWER SUPPLY IS PRE-WIRED FOR 120VAC  
TO WIRE FOR 240VAC MOVE JUMPERS AS SHOWN  
IN FIGURE 1

2 REVISION 2 HAS REVISED WIRING DIAGRAM  
FOR REVISION 1, REFER TO DOCUMENT 'PS42V20S-0F\_REV1'

3 SOME COMPONENTS OMITTED FOR CLARITY

WIRING PINDUT  
INPUT:

- IN1: HOT (AC INPUT BLACK)
- IN2: 120/240VAC JUMPER
- IN3: 120/240VAC JUMPER
- IN4: 120/240VAC JUMPER
- IN5: LINE (AC INPUT WHITE)
- IN6: CHASSIS GROUND

OUTPUT:

- OUT1: 48VDC (AT 20A)
- OUT2: 48VDC (AT 20A)
- OUT3: 48V RETURN
- OUT4: 48V RETURN

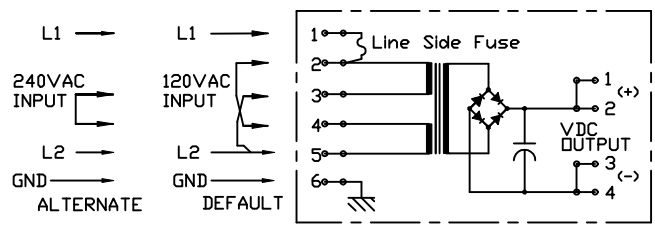
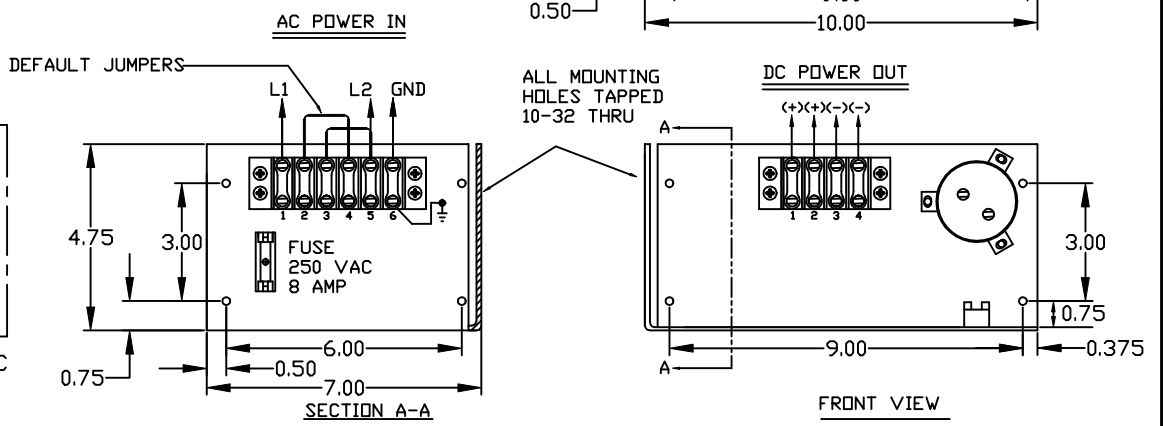
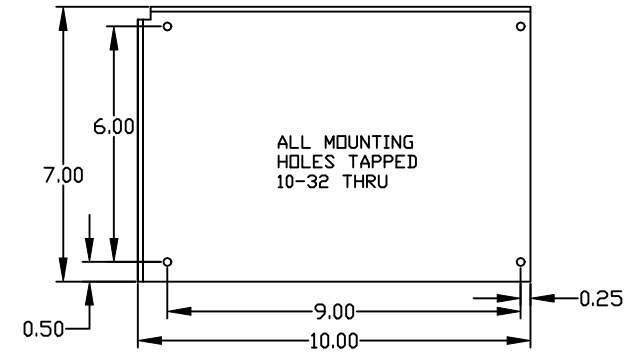
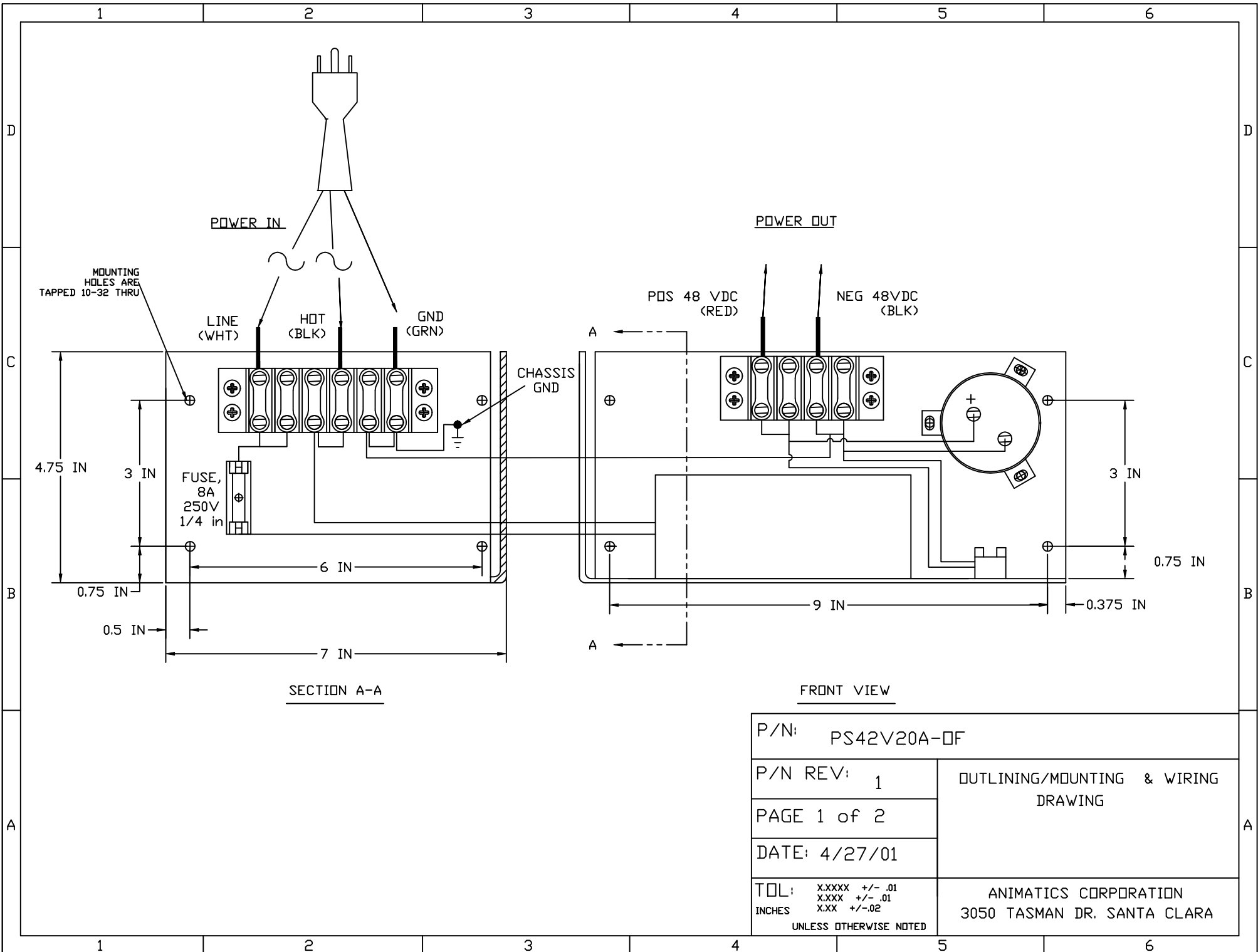


FIGURE 1: 120VAC/240VAC SIMPLIFIED WIRING SCHEMATIC

ITEM NO.	QTY	PART NO.	DESCRIPTION	MATERIAL SPECIFICATION
PARTS LIST				
UNLESS OTHERWISE SPECIFIED, DIMENSIONS & TOLERANCES ARE PER ANSI Y14.5M AND ARE IN INCHES. TOLERANCES ARE AS FOLLOWS: DECIMALS XXXX ANGLES ± XXXXX				
MATERIAL		THIRD ANGLE PROJECTION		TITLE ANIMATICS PS42V20A-0F, Q&M/WIRING DIAGRAM
FINISH		APPROVALS		
		DATE		PART NO. PS42V20A-0F
		4/27/01		
		ENGINEER		REV 2
		SCALE		
		COMPUTER GENERATED DRAWING		SHEET 1 OF 1
		CAD FILE NAME		



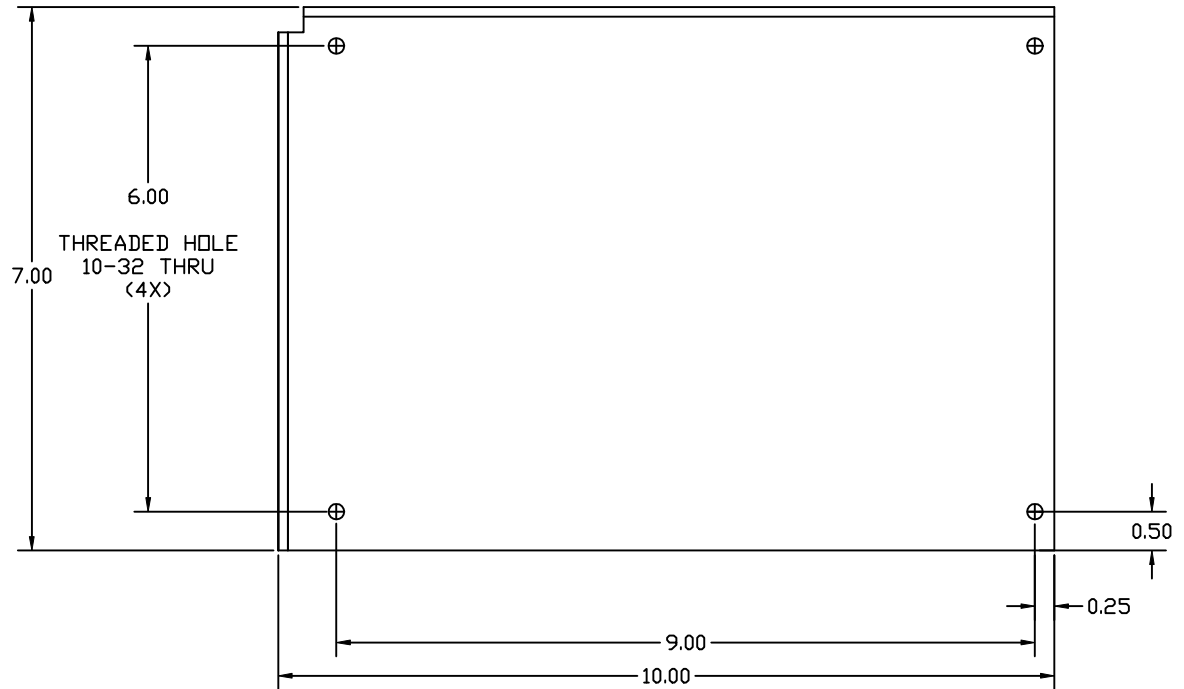
SECTION A-A

FRONT VIEW

P/N: PS42V20A-0F	
P/N REV: 1	OUTLINING/MOUNTING & WIRING DRAWING
PAGE 1 of 2	
DATE: 4/27/01	
TOL:   X.XXXX +/- .01 X.XXX  +/- .01 INCHES X.XX  +/- .02 UNLESS OTHERWISE NOTED	
ANIMATICS CORPORATION 3050 TASMAN DR. SANTA CLARA	

NOTES: 1) COMPONENTS OMITTED ON TOP VIEW FOR CLARITY

TOP VIEW



P/N: PS42V20A-0F	
P/N REV: 1	OUTLINING AND MOUNTING DRAWING
PAGE 2 of 2	
DATE: 4/27/01	
TOL: X.XXXX +/- .01 X.XXX +/- .01 INCHES X.XX +/- .02 UNLESS OTHERWISE NOTED	ANIMATICS CORPORATION 3050 TASMAN DR. SANTA CLARA